

CREATIVITY SUPPORT TOOLS

Accelerating Discovery and Innovation

How can designers of programming interfaces, interactive tools, and rich social environments enable more people to be more creative more often?

Since scientific discoveries and engineering innovation produce broad benefits, improved tools that advance individual, group, and social creativity are important contributions. The current and forthcoming generations of programming, simulation, information visualization, and other tools are empowering engineers and scientists just as animation and music composition tools have invigorated filmmakers and musicians (see the sidebar “New Media Arts and the Future of Technologies”). These and many other creativity support tools enable discovery and innovation on a broader scale than ever before; eager novices are performing like seasoned masters and the grandmasters are producing startling results. The accelerating pace of academic research, engineering innovation, and consumer product design is amply documented in journal publications, patents, and customer purchases.

Illustration by Brad Yeo

While telescopes and microscopes extended an individual's perceptual abilities to make discoveries, modern creativity support tools also enable new forms of expression for individuals, and they are especially potent in supporting group collaboration and social creativity (see the table here). Creativity includes discovery or invention of a significant idea, pattern, method, or device that gains recognition from accepted leaders in a field, while innovation requires further steps to ensure adoption (see the section "Defining and Supporting Creative Processes"). For example, many researchers extend their perceptual abilities by applying general-purpose scientific or information visualization tools, which enable them to make discoveries about their data (see Figure 1). Other domain experts, such as genomic researchers, use specialized visual analysis tools to discover biological pathways. Scientists and engineers draw on powerful mathematical, design, and simulation tools to support their discovery and innovation (see Figure 2). New media artists realize their desire for personal expression with powerful development environments that support animation, music, or video editing tools.

Even more remarkable opportunities have emerged for group collaboration across time and space, as afforded by programming environments that enable distributed teams to accelerate development of software projects. Still broader impacts stem from social creativity tools, such as wikis, citizen journalism, and media sharing, which enable thousands of cooperating individuals to create and share significant new content and services.

Never before has it been possible to arrange rapid and broad collaboration among numerous content creators and service providers. Understanding the passion and persistence required for individual creativity is difficult enough, so designing for social creativity requires rigorous research, with fresh theories of collective efficacy and the motivational impact of

rewards and recognition (see the sidebar "Sustaining Social Creativity").

A HISTORIC SHIFT

During the past half-century, computing professionals have developed potent productivity support tools that reduced manufacturing costs, tightened supply chains, and strengthened financial management. These business productivity support tools were designed to meet clear requirements such as improving insurance claim processing, reducing costs for airline reservations, or simplifying order entry. These tools were conveniently evaluated by standard measures such as time per task, cost per transaction, and errors per order.

But now, a growing community of innovative tool designers and user interface visionaries is addressing a greater challenge and moving from the comparatively safe territory of productivity support tools to the more risky frontier of creativity support tools. The challenges they face stem from the vague requirements for discovery and innovation, as well as from the unorthodox user behaviors and unclear measures of success. The

risks are high, but so are the payoffs for innovative developers, ambitious product managers, and bold researchers. Creativity support tools extend users' capability to make discoveries or inventions from early stages of gathering information, hypothesis generation, and initial production, through the later stages of refinement, validation, and dissemination.

A way forward for research and development on creativity support tools has been to focus on specific tasks that support discovery in the sciences, exploration in design, innovation in engineering, and imagination in the arts. For example, we already know that an accelerator for creative efforts is the capacity to locate, study, review, and revise existing projects and performances, such as open source software modules, Web page source code, architectural drawings, or music scores. The Web has done much to make existing projects and performances accessible

Individual and Group Creativity Support Tools	
Information visualization tools	Spotfire, SAS JMP, DataDesk, ManyEyes, Digg
Specialized visualization tools: GIS	Google Maps, ArcInfo
Specialized visualization tools: gene expression analysis	GeneSpring, DNASTAR
Mathematical manipulation	MatLab, Mathematica
Engineering, architectural, industrial, product design	Autocad Inventor, DataCAD, SolidWorks
Simulation	SPICE, Tierra
New media development environments	Max/MSP, Pd, processing
Animation and interaction	Flash, FLEX, OpenLaszlo
Music	Cinescore, Cakewalk Sonar
Video editing	Premier, Final Cut Pro, Lightworks, iMovie, Windows MovieMaker
Concept mapping	Inspiration, MindMapper, MindManager, Axon
Group and Social Creativity Support Tools	
Software development	Eclipse, JDeveloper, Visual Studio
Wikis	Wikipedia, Wikia
Citizen journalism	Blogger, Ohmynews, Slashdot
Media sharing	Flickr, YouTube
Music	Garageband, MacJams

Samples of classes of creativity support tools and examples of products.

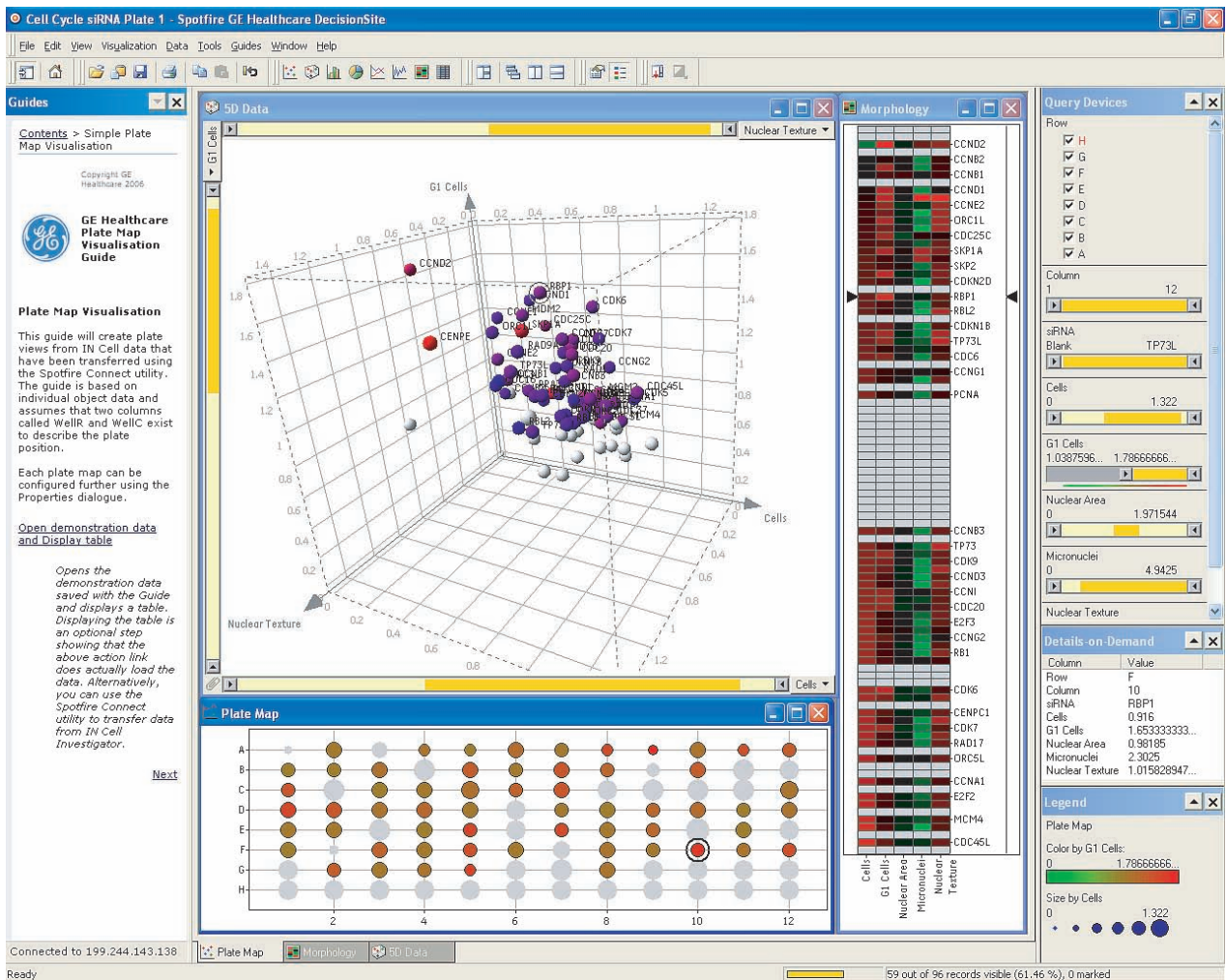


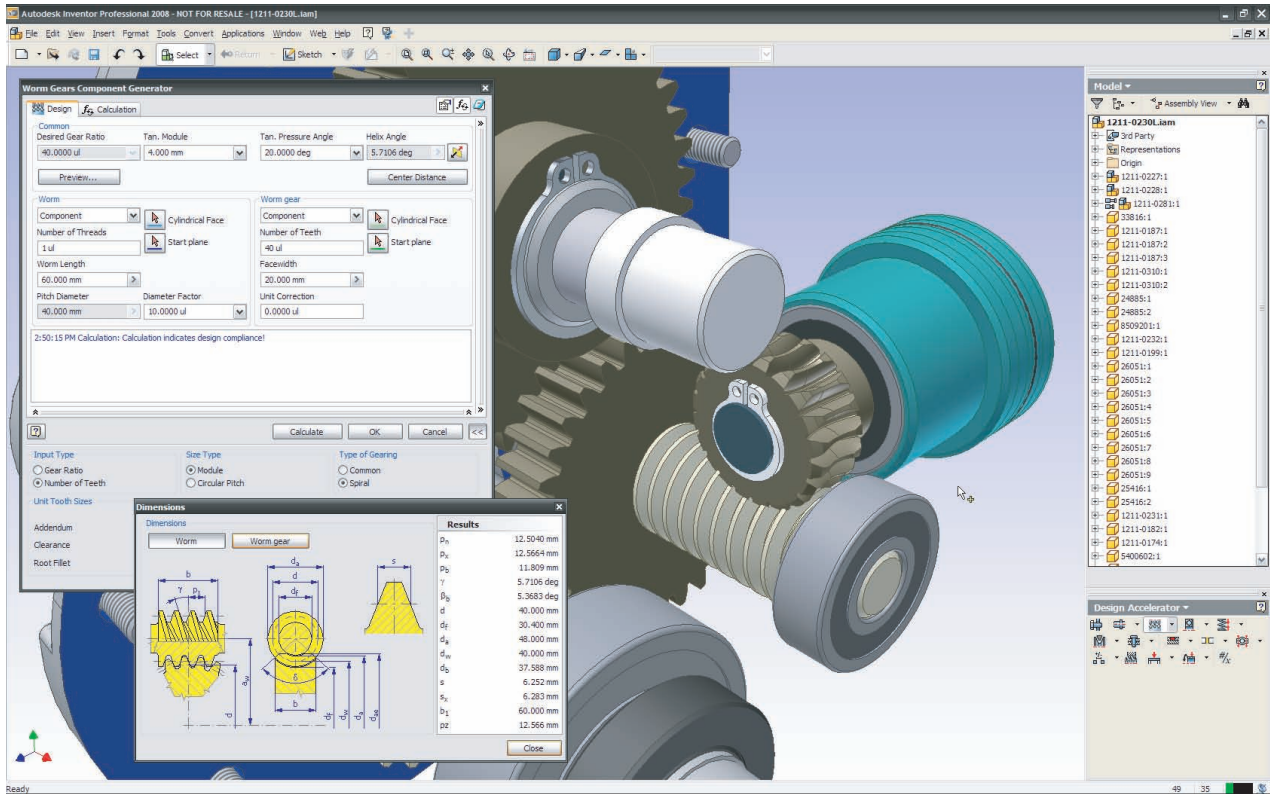
Figure 1. The IN Cell Analyzer automated microscope was used to identify proteins influencing the division of human cells. After the images were analyzed, quantitative results were transferred to Spotfire DecisionSite. This screen revealed the previously unknown involvement of the retinol binding protein RBP1 in cell cycle control (see Stubbs, S. and Thomas, N., *Methods in Enzymology* 414 (2006), 1–21). Retinol—a form of Vitamin A—plays a crucial role in vision and during embryonic development (courtesy of Nick Thomas, GE Healthcare).

and search engines like Google have helped innovators to quickly find what they want. Future search engines can be designed far more elegantly to enable users to find the relevant results with specific features. While current search engines can find sonatas, singling out those in a romantic style with accelerating tempo written in France during the 20th century may be more difficult to achieve. Often searchers need help in discovering the range of possibilities, while learning the concepts and terminology. Such exploratory searches may take users weeks or months to complete, requiring note taking, consulting with colleagues, and refining their goals. Of course, intellectual property policies must be modernized, to let users more easily build on previous work while paying fair licensing fees. Diverse proposals for copyright reform, patent modernization, and the Creative Commons offer modernizations of legal structures that accommodate these new technologies and new ways of working.

A second example of creativity support is the capacity for users to rapidly generate multiple alternatives, explore their implications, or revert to earlier stages when needed. Hypothesis generation for sci-

tists, prototypes for software engineers, models for architects, and sketches for artists are well established as important steps in their agile creative processes. Certainly well-designed software tools can help creators in generating multiple possibilities, showing the implications of their choices and tracking their design decisions [12]. The best tools enable users to save their history, edit it, email it, and replay it thousands of times with different parameters.

These and other examples distill emerging design principles, but skeptical business professionals, inspired artists, and diligent academics still worry about whether creativity support is an achievable goal. They may deride suggestions that creative human endeavors can be aided by inherently structured user



interfaces that inevitably limit exploration. These concerns are taken seriously by creativity support tool designers, who recognize the difficulties, but already see grand successes and future opportunities. Just as telescopes, microscopes, and cameras are powerful devices that enable discoveries and innovations, they are still only tools; the act of creation is carried out by the users.

As a computer and information science research topic, creativity is still emerging. The ACM Computing Reviews Classification System has more than 1,500 entries, but does not include creativity, discovery, exploration, or innovation. By contrast, creativity-related topics are currently high in national priorities worldwide, generating calls for support from national science research boards [6, 7]. At the same time, national legislators and regional planners are concerned about promoting competitiveness, enhancing workplace innovation, and attracting creative industries. Their emphasis ranges from support for game design entrepreneurs and film animation companies to pharmaceutical drug discovery teams and consumer product designers.

Traditional descriptions of creativity often suggested that creative personalities—the Einsteins and Picassos of the world—were rare occurrences with special talents who came along once in a generation to transform the world. The modern belief, held by many teachers and researchers, is that creativity can be

Figure 2. Using Autodesk Inventor's Design Accelerators for engineering tasks such as shaft design, gear design, and bearing selection, engineers at Stork Townsend, Inc. were able to create a custom gearbox with confidence that the unit would perform to expectations in a harsh environment. Shown here: the Worm Gear Generator is used to create matched sets of paired gears used in this gearbox design. All mating assembly constraints are automatically added, and an additional benefit to users is that this same interface is used for any edits to the gear pairs (courtesy of Autodesk and Stork Townsend, Inc.).

taught, and that everyone can be creative. This is a remarkable transformation from 400 years ago, when scholars devoted much energy to copying or translating the words of Aristotle and other long-dead authors. While learning from and building on past work is important, the Web and the broad use of information and communications technologies has raised expectations that every student should write poems/programs, make photos/videos, design interfaces/games, and then disseminate them to others. The widespread availability of books and then electronic media transformed education so that now every student is expected to compose original texts, videos, animations, music, and art. Teachers also expect their students to produce science and engineering projects with fresh empirical evidence, original discoveries, or innovative devices [8].

DEFINING AND SUPPORTING CREATIVE PROCESSES

While there has been extensive research on creativity in many disciplines, the topic is a relatively new one

in computer and information science. The excellent *Handbook of Creativity* [11] covers many research directions but terms such as “computer” and “user interface” don’t even appear in the index. The large amount of literature on creativity, discovery, design, innovation, and composition may be sorted into three intersecting schools:

- **Structuralists** believe people can be creative if they follow an orderly method, typically described with several stages, such as preparation, incubation, illumination, and verification. There is ample anecdotal evidence that great breakthroughs happened according to this generic method, but many variations are

Just as telescopes, microscopes, and cameras are powerful devices that enable discoveries and innovations, they are still only tools; the act of creation is carried out by the users.

promoted by self-help books, organizational creativity consultants, and systematic discovery methods such as TRIZ (Theory of Inventive Problem Solving; www.triz.org). Systematic approaches to exploratory search include the Arrowsmith (<http://arrowsmith.psych.uic.edu>) method for finding unusual overlaps in distant disciplines and the combinatorial hypothesis generation (exhaustive search) for multiparameter simulations.

- **Inspirationalists** argue that breaking away from familiar structures elicits creative solutions. They advocate working on unrelated problems, getting away to scenic locations, and viewing random photos or inkblots. Inspirationalists promote meditation, hypnosis, dreaming, and playful exploration. They seek to liberate thinking from old habits so as to break through to the Aha! moment of inspiration. This school of thinking advocates sketching to quickly explore possibilities, concept mapping to discover unexpected relationships, and visualization strategies to see the big picture.

- **Situationalists** recognize that creative work is social. They seek to understand the motivation of creative people, their family history, and their personal relationships with challenging teachers, empathic peers, or helpful mentors. They understand the need for distinctive forms of consultation at early stages when fear of rejection, ridicule, and rip-off are high versus later stages when validation, refinement, and dissemination are prominent. Situationalists seek to understand the motivating roles of rewards and recognition (for example, does

the Nobel Prize promote creative work?), as well as competition vs. collaboration.

Each of these three schools offers important lessons for designers of creativity support tools. Structuralist thinking encourages systematic tools that include progress indicators with reminders of what is still needed. The inspirationalist view supports development of image libraries, thesauri, sketching interfaces, and concept-mapping tools. Situationalists broaden the designer’s view to include email and collaboration tools, as well as the e-science notebooks that guide users and coordinate groups through scientific processes over weeks, months, and years.

A prominent situationalist researcher is Mihaly

Csikszentmihalyi, whose in-depth interviews with 91 famously creative people [2] led him to make these useful, but provocative definitions:

Domain: “consists of a set of symbols, rules, and procedures” that are accepted and used by a well-defined community, such as mathematics or biology.

Field: the respected leaders in a domain: “the individuals who act as gatekeepers to the domain...decide whether a new idea, performance, or product should be included.”

Individual: creativity starts with individual motivations and insights, but requires social confirmation. He defines creativity as “when a person...has a new idea or sees a new pattern, and when this novelty is selected by the appropriate field for inclusion in the relevant domain.”

On first reading, Csikszentmihalyi’s definition may be disturbing, since it implies that contributions are creative only when recognized by journal editors, patent examiners, symphony directors, and others in similar roles. Many people feel they are able to judge their own contributions, but Csikszentmihalyi’s definition asserts that to gain recognition, contributions must be judged by accepted leaders in a field. He makes clear that creative people need to respect previous work and to present discoveries and innovations in a way that clarifies their contributions. Csikszentmihalyi’s definition stresses context, making creativity a social and political process in which the structured methods and Aha! moments are merely middle stages.

CHANGING MIND-SETS

Getting information technology companies and academic researchers to invest resources in creativity-related research and development requires at least three significant changes in mind-sets.

- **Developers** who understand that benchmark task completion is giving way to playful exploration, richer search features, generation of multiple alternatives, and easy backtracking with rich history-keeping. They also recognize that Web-enabled social creativity environments can support innovative approaches to software development, content creation, and rapid dissemination of new ideas.
- **Product managers** who conceive of their customers as creators, rather than merely users or consumers, are already changing their requirements analysis, feature selections, and marketing strategies. They know creative people want open systems they can extend and that they want an audience, feedback, rewards, and recognition.
- **Researchers** who study and evaluate software usage are getting past old strategies of controlled studies and short-term usability testing to embrace ethnographic styles of observation, long-term case studies, and data logging to understand patterns of usage. They know that motivation, empathy, playfulness, and surprise are part of the creative landscape. They also know that getting the correct combination of individual discovery, supportive consultation, and community brainstorming generates high user engagement.

These changes to expectations for individuals and their institutions are important first steps in enabling more people to be more creative more often. But even with clarity about the goals, there are still numerous challenges such as developing design guidelines and appropriate research methods.

DESIGN PRINCIPLES FOR CREATIVITY SUPPORT TOOLS

World-famous architects such as Norman Foster and Frank Gehry claim their innovative buildings would not be possible without computer tools that enabled them to create their complex structures. Excellent interfaces, sometimes with rich domain-specific features, are essential for creativity support, as users need to apply their cognitive resources and passions fully to their discoveries and innovations. While experience across domains is diverse, there are underlying principles to guide designers [5, 9]. These principles include:

Support exploratory search: To be successful at discovery and innovation users should be aware of previous and related work, but finding relevant

items may prove challenging with traditional keyword search. Google is great for fact finding, and it can be helpful for exploratory search projects, but there is much room for improvement. The inspirationalist school of creativity encourages viewing many relevant examples of previous work to engage innovators in a creative mind-set. Faceted search (simultaneous menus on independent aspects such as people, geography, and time) helps guide users by providing compact visual cues about attributes and attributes values. Dynamic queries (changes to sliders, selectors, and filters, producing rapid changes to displays) support rapid incremental and reversible exploration that enables users to learn about distributions, gaps, and outliers. Improved search services provide rich mechanisms for organizing search results by ranking, clustering, and partitioning with ample tools for annotation, tagging, and marking. Advanced search services also enable seamless collaboration with shared views, chat rooms, and emailing of result sets. Since serious discovery and innovation may require group processes that last for weeks or months, as in legal, patent, or scientific article searches, history-keeping facilities are helpful, as are overviews of what has been done and what remains to be accomplished.

Enable collaboration: While the Aha! moments of discovery and innovation are very personal, the processes that lead to them are often highly collaborative. Inspirationalists and situationalists claim collaborations at early stages revolve around problem definition and setting goals, so consultations must be handled carefully because innovators fear rejection, ridicule, and rip-off. Communications systems that let users expose their uncertainties in a safe environment could help build trust, and designs that record who said what can document contributions to emerging ideas. Trust, accurate records, and safe exchanges are also needed in the middle stages when information gathering, idea refinement, and knowledgeable partners are important. In later stages, when validation and dissemination become dominant, finding appropriate test situations, preview audiences, and media partners is helpful. These processes are well understood for individuals and small groups, but technology support for them is marginal. For the larger communities engaged in social creativity, wholly new forms of collaboration are emerging. Wikipedia and its support environment, Wikimedia, have proven to be remarkable and surprising success stories, defying expectations by finding a good balance between freewheeling individual effort and well-enforced administrative principles. Each individual contribution to Wikipedia may be small, but the

Wikimedia environment produces an intense collaborative effort that leads to an impressive and original product. Thomas Edison famously quipped that genius is 1% inspiration and 99% perspiration, but now he might remark that innovation is 1% inspiration and 99% collaboration.

Provide rich history-keeping: Many people believe discovery and innovation processes take many forms, so it is difficult to provide precise guidance in a step-by-step manner. But after casting aside rigid and doctrinaire strategies, semi-structured methods or at least an orderly process has repeatedly been shown to be beneficial. The structuralist school embraces systematic approaches; sometimes around the traditional phases of preparation, incubation, illumination, and verification, but often around more carefully defined methods such as the 40 potential phases of TRIZ (see www.triz.org). While Thomas Edison tested more than 4,000 filament variations for his light bulb, newer forms of structured discovery apply computer-based exhaustive search of millions of cases to understand optimal conditions and relationships among parameters. Whether discoverers and innovators used structured or free-form thinking, the benefits of rich history-keeping are apparent. Users have a record of which alternatives they have tried, they can compare the many alternatives, and they can go back to earlier alternatives to make modifications. History-keeping on computers has still more benefits, such as sending interesting cases to colleagues for comments and creating macro processes that can be run repeatedly on new data.

Design with low thresholds, high ceilings, and wide walls: This metaphoric description of desirable attributes for creativity support tools suggests that tools should be easy for novices to begin using, yet provide ambitious functionality that experts need. Good tools should also have a wide range of functionality so that many different services are provided, from data input and statistical analyses to report generation. A single tool with a uniform user interface reduces frustrating file conversions and enables users to concentrate on their problems. Of course, there are limits to what one tool can do and also good arguments for modular designs, as well as domain-specific variations. Still, when users can import datasets easily, handle missing data, transform values, try multiple visualizations, run statistical tests, include annotations, and export subsets of data in desired formats, then they are free to concentrate on their exploration rather than cleaning data, recording comments, and transforming file formats. One strategy for satisfying this principle is to use a multilayer interface design that allows novices to begin a first layer and move up

as their experience increases and needs require. Many video games have dozens of layers, most search engines have novice and advanced layers (Google, Yahoo), many art and video tools have three or more workspaces (Apple Final Cut Pro, Adobe Premiere), and some tools have as many as eight layers to accommodate a wide range of expertise and ambition.

RIGOROUS RESEARCH METHODS

These design principles for creativity support tools and the tools themselves would be difficult to validate with controlled studies that measured time to correct completion of benchmark tasks. Approximately 300 years of scientific methods based on a reductionist model and controlled experimental studies have produced huge benefits, but the complex nature of human discovery and innovation cannot be studied like pendulums or solid-state materials [1, 3].

Researchers are beginning to understand that design of discovery and innovation tools is a worthy subject of study, but they are often torn by devotion to traditional controlled studies. They also face pressure from many journal and conference reviewers, who favor statistically significant results, even when laboratory-controlled studies with many participants are inappropriate. The emphasis on close study of domain experts as they make discoveries has led many researchers to adopt case study, observational, and interview methods with small numbers of users over weeks and months. Their goal is to capture the processes that precede breakthrough incidents and to collect evidence that supports hypotheses about how software design features promote creative moments.

The intense desire for validity that comes from close observations has led many researchers to take fresh approaches to other research goals like replicability and generalizability. Until many more case studies are collected and many related problems are studied, carefully documented methods are needed to answer critics who are legitimately concerned about misleading interpretations based on experimenter bias [4]. Individual case studies are meant to provoke multiple case studies that replicate findings with diverse users and problems. As multiple case studies replicate results, researchers gain confidence in the replicability and generalizability of cause-and-effect conjectures. Many researchers have already demonstrated high payoffs in understanding how powerful tools can support creative people. These researchers also argue that creative work in science, design, or the arts evolves so rapidly that replicability has a different meaning than in physical sciences research where the properties of

SUSTAINING SOCIAL CREATIVITY


By Gerhard Fischer and Elisa Giaccardi

Although creative individuals are often thought of as working in isolation, much of our intelligence and creativity results from interaction with tools and artifacts and from collaborating with other individuals [4]. Many traditional approaches to creativity, however, have disregarded the importance of social and material surroundings. A richer framework would enable software developers, interaction designers, content managers, and researchers to understand the opportunities, challenges, and principles of social creativity.


Social Creativity. As demonstrated by leading scientists, movie directors, and influential politicians, an individual's skills and experience can significantly influence the success of a project. Individual and social creativity can and must complement each other. In complex design problems such as urban planning, for example, the difference in knowledge, expertise, and perspectives that exist among individuals provides the ground to collaborate toward more creative and sustainable solutions [1]. The same is true for scientific laboratories [8], in which computer scientists work with domain specialists to accelerate knowledge development and dissemination, and for creative practices such as art and technology collaboration, the results of which supersede what a single artist or computer scientist could have achieved in isolation [3, 9]. Environments supporting mass collaboration and social production such as annotated collections (GenBank), media sharing (Flickr, YouTube), wikis (Wikipedia), folksonomies (del.icio.us), and virtual worlds (Second Life) are other examples of social creativity. The diverse and collective stock of scientific content and artistic or stylistic ideas that individuals and communities share, reinterpret, and use as a basis for new ideas and visions constitutes the vital source of invention and creativity.

Focusing on Communities. Socio-technical environments are necessary for communities to collaborate and bring social creativity alive: to express themselves, combine different perspectives, and generate new understandings. In large and heterogeneous groups working together for long periods of time over complex design problems, as well as in communities including individuals with diverse but converging goals and intentions, distances and diversity between contributing individuals can enhance creativity rather than hinder it. The challenge is not to reduce heterogeneity and specialization but to

support it and manage it at both the technological and social level by finding ways to build bridges between individuals and exploiting conceptual collisions and breakdowns to stimulate imagination and invention. The distances are distributed in multiple dimensions: spatially (across physical distance), temporally (across time), technologically (across artifacts), and conceptually (across individuals, communities, and cultures) [5]. This distribution provides a foundation for social creativity by making all voices heard, harnessing diversity, and enabling people to be aware of and access each other's work and ideas, relate them to their own, and contribute the results back to the community.



Creativity
needs the
"synergy of
many."



Constructing Socio-Technical Environments. Because social creativity has "no head," externalizations are vital to socio-technical environments. Externalizations support creativity by: producing a record of our mental efforts; causing us to move from vague mental conceptualizations of an idea to a more concrete representation of it; making thoughts and intentions more accessible for personal reflection; and providing a means by which other individuals

can interact with, react to, negotiate around, and build upon an idea. One example of this is when sketching is used to share and negotiate design concepts. Externalizations support creativity by enabling individuals also to: sense new aspects of the environment experienced by other individuals; interact with it in new ways; and socially unfold and interpret emotions and behaviors [7]. One example is Flickr, where people can develop new photographic styles by looking at how other people have photographed or "sensed" their environment. Another example is our collaborative mapping system The Silence of the Lands (www.thesilence.org), in which geo-located information is overlapped with a person's individual perceptions of specific aspects of the sonic environment. From this enriched perspective, externalizations for social creativity (shared representations, pictures, sounds, and so forth) must be thought of as an instrument for creative conversations, rather than a tool for categorization.

Harnessing the Synergy of Many by Meta-design. Creativity needs the "synergy of many" [2], and this kind of synergy can be facilitated by meta-design. Meta-design is a socio-technical approach that characterizes objectives, techniques, and processes that allow users to act as designers and be cre-

ative in personally meaningful activities [7]. However, a tension exists between creativity and organization. A defining characteristic of social creativity is that it transcends individual creativity and thus requires some form of organization; but elements of organization can and frequently do stifle creativity [6]. Advocates of meta-design address such a challenge and promote the importance of keeping environments open to users' modifications and adaptations by technical and social means that empower participation. This serves a double purpose: to provide a potential source for new insights, new knowledge, and new understandings; and to provide a higher degree of synergy and self-organization. Meta-design can facilitate social creativity by shifting the focus from finished products or complete solutions to conditions for many to explore mismatches and embrace new emerging opportunities during use. How to generate and sustain these conditions effectively is the next challenge for software developers, interaction designers, content managers, and researchers. **C**

REFERENCES

1. Arias, E.G. et al. Transcending the individual human mind—Creating shared understanding through collaborative design. *ACM Transactions on Computer Human-Interaction* 7, 1 (2000), 84–113.
2. Benkler, Y. *The Wealth of Networks: How Social Production Transforms Markets and Freedom*. Yale University Press, New Haven, 2006.
3. Candy, L. and Edmonds, E.A. *Explorations in Art and Technology*. Springer-Verlag, London, 2002.
4. Csikszentmihalyi, M. *Creativity—Flow and the Psychology of Discovery and Invention*. HarperCollins Publishers, New York, NY, 1996.
5. Fischer, G. Distances and diversity: Sources for social creativity. In *Proceedings of Creativity and Cognition*, (London, April 2005), 128–136.
6. Florida, R. *The Rise of the Creative Class and How It's Transforming Work, Leisure, Community and Everyday Life*. Basic Books, New York, NY, 2002.
7. Giaccardi, E. and Fischer, G. *Creativity and Evolution: A Metadesign Perspective*. Digital Creativity, (forthcoming).
8. Kouzes, R.T., Myers, J.D., and Wulf, W.A. Collaboratories: Doing science on the Internet. *IEEE Computer* 29, 8 (1996), 40–46.
9. National Research Council. *Beyond Productivity: Information Technology, Innovation, and Creativity*. National Academy Press, Washington, D.C., 2003.

GERHARD FISCHER (gerhard@colorado.edu) is a professor in the Department of Computer Science, a Fellow of the Institute of Cognitive Science, and the director of the Center for LifeLong Learning and Design (L3D) at the University of Colorado in Boulder, CO.

ELISA GIACCARDI (elisa.giaccardi@colorado.edu) is a research associate at the University of Colorado Center for LifeLong Learning and Design in Boulder, CO.

electrons or tensile strength of steel can be studied again and again under diverse conditions. In medicine, business, and other research domains, when case study methods are based on established procedures to limit bias, they are accepted as valuable contributions.

Year-long studies of artist-technologist collaborations (as described in the sidebar “New Media Arts and the Future of Technologies”) and a long tradition of ethnographic research have influenced the multi-dimensional in-depth long-term case studies, which are emerging as an accepted research method for scientific discovery and design innovation [10]. The key idea is to closely study domain experts who are working on their own problems over a period of weeks or months. This is a form of hypothesis testing, in which the goal is to collect quantitative and qualitative evidence about how a creativity support tool benefits its users. When the focus is on documenting and understanding how specific features contribute to successful outcomes, the researchers often produce insights that have substantial and broad value.

Researchers become more than participant observers, as they may help the users to apply the tool effectively while recording their reactions. In a growing number of studies, once-a-week visits for one to two hours over a one- to four-month period enabled participant observers to gather evidence about what worked and what did not. The users benefit by having access to novel technologies and the participation of sympathetic researchers, who are eager to see the users succeed. Careful logs of tool usage and audio or video recordings document critical incidents and reveal problems with the tool design or usage. The close linkage of researchers and users violates traditional experimental design principles, but it seems necessary to understand creative processes that involve individual, group, and social environments. Complementary analyses from usage logs, interviews, surveys, or focus groups—usually referred to as triangulation—can contribute additional insights and increase perceived validity.

CONCLUSION

Creativity support tools have been around for as long as people have been creative. However, designers of modern computer-based environments are enabling new discovery and innovation processes for individuals, groups, and communities. In order to improve their design, they need refined theories and rigorous empirical studies based on new research methods. The close collaboration required by multidimensional in-depth long-term case studies can produce breakthrough insights about how discovery and innovation occur.

NEW MEDIA ARTS AND THE FUTURE OF TECHNOLOGIES

By Linda Candy

New technology is increasingly becoming an integral part of creative practice in the arts. This offers an exciting and challenging opportunity for computer scientists, software engineers, and interface designers. To guide their efforts for the audience of artistic end users, developers will need to know more about innovative uses of technology by new media artists.

One of the ACM Education Board's Great Principles of Computing project's four core practices is innovating [4]. Innovation is the process of creating something new that is then adopted in practice. We need to find ways of drawing more attention to this aspect of our work and placing concerns for innovation and creativity more centrally in the canon of methods and terms we use. For innovation to take place, however, complex social, organizational, and cultural factors must be harnessed; on the other hand, strategies for supporting creativity are directly within the province of the computer science community via the design and development of creativity support technologies. This is the primary focus of this sidebar.

In advancing this idea we could benefit from applying the principle of "Hitching our research to someone else's driving problems, and solving those problems on the owners' terms," which can lead to "richer computer science research" [1]. What better way forward than to begin by focusing our attention on indisputably creative application domains and how they meet the needs of creative professionals and their ever-expanding demand for more effective computer systems? As an example, consider image manipulation and well-developed applications such as Photoshop, which have achieved widespread success and adoption. The use of a multi-layered approach [11] is powerful in the way it enables the user to start with a basic set of facilities and go deeper in as and when more functionality is needed. This enables the user to focus on the essentials of the creative task without the hindrance of having to grapple with

unhelpful complexities imposed by the system. Creativity support systems can support the user by encouraging exploration and enhancing collaboration and if technology developers design with creative cognition in mind and recognize the vital role of the social context of creativity, the tools they develop will be more effective.

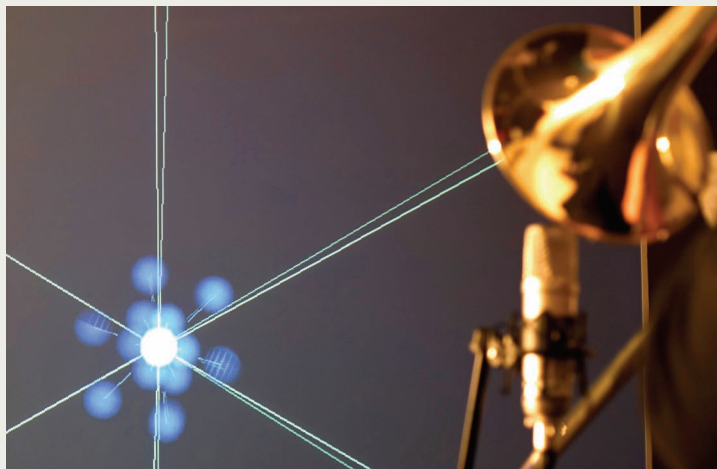
ARTISTS AS POWER USERS: A SYSTEMS PERSPECTIVE

Taking the focus on creativity support further, there are today many examples of creativity enhancing systems being developed by artists working with new media [2]. Some artists are creative power users who need to access the full

capability of the computer: they either perform programming tasks or collaborate closely with programmers. This kind of artist user is a special kind of programmer needing dynamic and flexible software environments.

Consider the example of Andrew Johnston, a software engineer and trombonist, who in collaboration with Ben Marks, a musician composer,

has developed a software instrument that responds to someone playing or singing by creating sound and visual images that capture and reflect the human performance. Musicians have described it as rather like playing with a partner. This collaboration, initially driven by creative impulses rather than scientific ones, is an example of how creative work across different disciplines can not only lead to new tools for creative expression but also yield new insights into principles that can inform the design of innovative digital tools. Johnston's system is written in Pd (Pure Data). One aspect of his method involves developing the code during sessions in which the musicians use the system. This process involves developing the code (or parts of it) with the musicians as they explore. Johnston likes to call his software constructs toys, things with which people constructively play. Making art systems might seem a little esoteric and making games rather limited, but making creative toys opens up new opportunities for exploration and collaboration through playfulness [7].



A trombonist plays with an interactive musical instrument from "Partial Reflections" by Andrew Johnston and Benjamin Marks.

Art making is as much (or more) about creating new forms as creating new content. In the former case, the artist requires more than application-level software to fully support the work. Pd is an environment in the Max/MSP family, which Lyon called an instrument design language [9]. Artists in many media use such systems to build instruments, or software environments, that need to be extended, personalized, or integrated. What is often needed is a context-dependent environment. Systems like Max/MSP are often used to build specific development environments that then enable the artist to explore their particular concerns. In collaboration with Prix Nica winner Yasunao Tone, a new audiovisual instrument was constructed using computational representations of the concepts at the center of Tone's creative practice [5].

John Maeda has argued for more emphasis on the use of "software sketching," where a loose and initially poorly defined piece of code can be constructed in order to help move the idea-generation process forward [10]. Creative practitioners spend much important effort on exploration and problem finding. This requires a fluid engagement with the materials at hand—much of this is software. Maeda has drawn upon very successful models of software environment styles, such as Max/MSP [3], which are both visual and dynamic and hence supportive of the rapid exploration and feedback needed in the idea-generation process. The need for dynamic, flexible, and complete software environments is central to creative users. Because these environments must be situated in or adaptable to specific domains (such as music), and these domains are themselves shifting, this poses key challenges for future technologies.

TALKING ABOUT CREATIVITY: AN EXTENDED VOCABULARY

As well as pointing to a specific focus in software development approaches, the study of creative digital practitioners leads to a need to develop and extend the vocabulary we use to discuss interactive systems. Jonas Löwgren suggests we need to regularly use terms that do not necessarily derive from a work-oriented view (including relevance and usefulness). Instead, he suggests playability, seductivity, and fluency, for example. He also points out that ambiguity can be a positive property in relation to creativity [8]. For the artist, the term engagement may be a more significant than usability, and is already used by researchers and software developers. Because building systems for creative engagement is still mostly confined to new media arts we must make an effort to extend it to other kinds of interactive systems. With an extended vocabulary, software design can grapple with the issues of creativity in a much more comprehensive way.

The ever-expanding demand for more effective computer systems by creative practitioners in the arts, music, literature, and new media, can guide designers in meeting the needs of all creative professionals. The arrival of complex art systems has opened up new avenues that are impacting our thinking about what is possible and desirable. We are already familiar with how computing can impact the creative arts, but now we see the emergence of creative communities that can influence computing. This is a lively two-way process that benefits both communities. Art is impacting technology and technology is impacting art. On a wide front exciting changes are in the air. The emergence of communities of research and practice that are exploring how the arts can influence computing is an exciting prospect. The role of aesthetics in programming and other core elements of computer science is a challenging development for the future of computing. The recent work of artists as power users follows the evolutionary trend of artists beginning with their use of the computer as a tool, and more recently as raw material that can be easily modified for creative applications. The next step beyond software as material is to view software as the subject material [6] and to use creativity as a means to redesign software itself. **C**

REFERENCES

1. Brooks, F. The computer scientist as toolsmith II. *Commun. ACM* 39, 3 (Mar. 1996), 61–68.
2. Candy, L. and Edmonds, E.A. *Explorations in Art and Technology*. Springer-Verlag, 2002.
3. Cycling 74. Tools for new media; www.cycling74.com/.
4. Denning, P.J. Great principles of computing, *Commun. ACM* 46, 11 (Nov. 2003), 15–20.
5. Edmonds, E.A. et al. Developing interactive art using visual programming. In C. Stephanis and J. Jacko, Eds., *Proceedings of Human-Computer Interaction 2003*. Lawrence Erlbaum, London, 2003, 1183–1187.
6. Fishwick, P. An introduction to aesthetic computing. *Aesthetic Computing*. The MIT Press, Cambridge, MA, 2006, 3–27.
7. Johnston, A. and Marks, B. Partial reflections. *Leonardo Transactions* 40, 5 (Oct. 2007), 510–511.
8. Löwgren, J. Articulating the use qualities of digital designs. In P. Fishwick, Ed., *Aesthetic Computing*. The MIT Press, Cambridge, MA, 2006, 383–404.
9. Lyon, E. Dartmouth symposium on the future of computer music software: A panel discussion. *Computer Music Journal* 26, 4 (Apr. 2002), 13–30.
10. Reas, C. and Fry, B. *Processing: A Programming Handbook for Visual Designers and Artists*. The MIT Press, Cambridge, MA, 2007.
11. Shneiderman, B. Promoting universal usability with multi-layer interface design. In *Proceedings of the Conference on Universal Usability (CUU'03)*, ACM Press, 2003.

LINDA CANDY (linda@lindacandy.com) is Senior Associate and Honorary Research Fellow in the Creativity and Cognition Studios, Faculty of IT, at the University of Technology, Sydney, Australia.

The growth of interest in creativity support tools in recent years is gratifying. The June 2005 U.S. National Science Foundation-sponsored workshop on the topic [9] inspired research under the CreativeIT program, a strong commitment to discovery and innovation research in the NSF five-year strategic plan [7], and the ambitious billion-dollar vision for cyber-enabled discovery and innovation research. The risks are high and the scientific methods novel, but the payoffs are substantial in bringing about thrilling moments of scientific discovery and engineering innovation. **C**

REFERENCES

1. Basili, V.R., Shull, F., and Lanubile, F. Building knowledge through families of experiments. *IEEE Trans. Software Engineering* 25, 4 (Apr. 1999), 456–473.
2. Csikszentmihalyi, M. *Creativity: Flow and the Psychology of Discovery and Invention*. HarperCollins, New York, 1996.
3. Fjermestad, J. and Hiltz S.R. Group support systems: A descriptive evaluation of case and field studies. *Journal of Management Information Systems* 17, 3 (Mar. 2000), 113–157.
4. Hewett, T. Informing the design of computer-based environments to support creativity. *International Journal of Human-Computer Studies* 63, 4–5, Special Issue on Computer Support for Creativity, E. Edmonds and L. Candy, Eds., (2005), 383–409.
5. Myers B.A., Hudson, S.E., and Pausch, R. Past, present and future of user interface software tools. *ACM Transactions on Computer Human Interaction* 7, 1 (Mar. 2000), 3–28.
6. National Academy of Sciences. *Beyond Productivity: Information Technology, Innovation and Creativity*. NAS Press, Washington, D.C., 2003.
7. National Science Foundation. *Investing in America's Future: Strategic Plan 2006–2011*. Arlington, VA, 2006.
8. Shneiderman, B. *Leonardo's Laptop: Human Needs and the New Computing Technologies*. MIT Press, Cambridge, MA, 2002.
9. Shneiderman, B. et al. Creativity support tools: Report from a U.S. National Science Foundation sponsored workshop. *International Journal of Human-Computer Interaction* 20, 2 (2006), 61–77; www.cs.umd.edu/hcil/CST.
10. Shneiderman, B. and Plaisant, C. Strategies for evaluating information visualization tools: Multi-dimensional in-depth long-term case studies. In *Proceedings of Beyond Time and Errors: Novel Evaluation Methods for Information Visualization, Workshop of the Advanced Visual Interfaces Conference* (2006); <http://portal.acm.org/citation.cfm?id=1168149.1168158>.
11. Sternberg, R., Ed. *Handbook of Creativity*. Cambridge University Press, Cambridge, U.K., 1999.
12. Terry, M., Mynatt, E.D., Nakakoji, K., and Yamamoto, Y. Variation in element and action: Supporting simultaneous development of alternative solutions. In *Proceedings of CHI 2004 Conference on Human Factors in Computing Systems*, ACM Press, New York (2004), 711–718.

BEN SHNEIDERMAN (www.cs.umd.edu/~ben) is a professor in the Department of Computer Science, the founding director (1983–2000) of the Human-Computer Interaction Laboratory (www.cs.umd.edu/hcil/), and a member of the Institute for Advanced Computer Studies at the University of Maryland at College Park.

Permission to make digital or hard copies of all or part of this work for personal or classroom use is granted without fee provided that copies are not made or distributed for profit or commercial advantage and that copies bear this notice and the full citation on the first page. To copy otherwise, to republish, to post on servers or to redistribute to lists, requires prior specific permission and/or a fee.